



IFB FQ15090

Rehabilitation of WMATA Parking Garages at Shady Grove (North), Franconia-Springfield (East) Grosvenor-Strathmore, and College Park

**Pre Bid Conference
JGB Lobby Level Meeting Room
June 1, 2015 at 8:30 am**



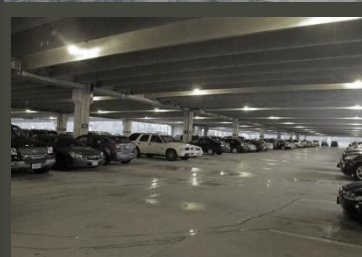


FQ15090 – Rehabilitation of Parking Garages at Shady Grove North, Grosvenor-Strathmore, College Park and Franconia-Springfield (East)



Topics of Discussion

- General Information
- Parking Garages Location and Description
 - Shady Grove North
 - Grosvenor-Strathmore
 - College Park
 - Franconia-Springfield (East)
- Typical Rehabilitation Requirements
 - Typical Expansion Joint to Be Repaired
 - Typical Construction Joint to Be Repaired
 - Typical Concrete Cracks to Be Repaired
- Program Schedule Requirements
- Site Visit

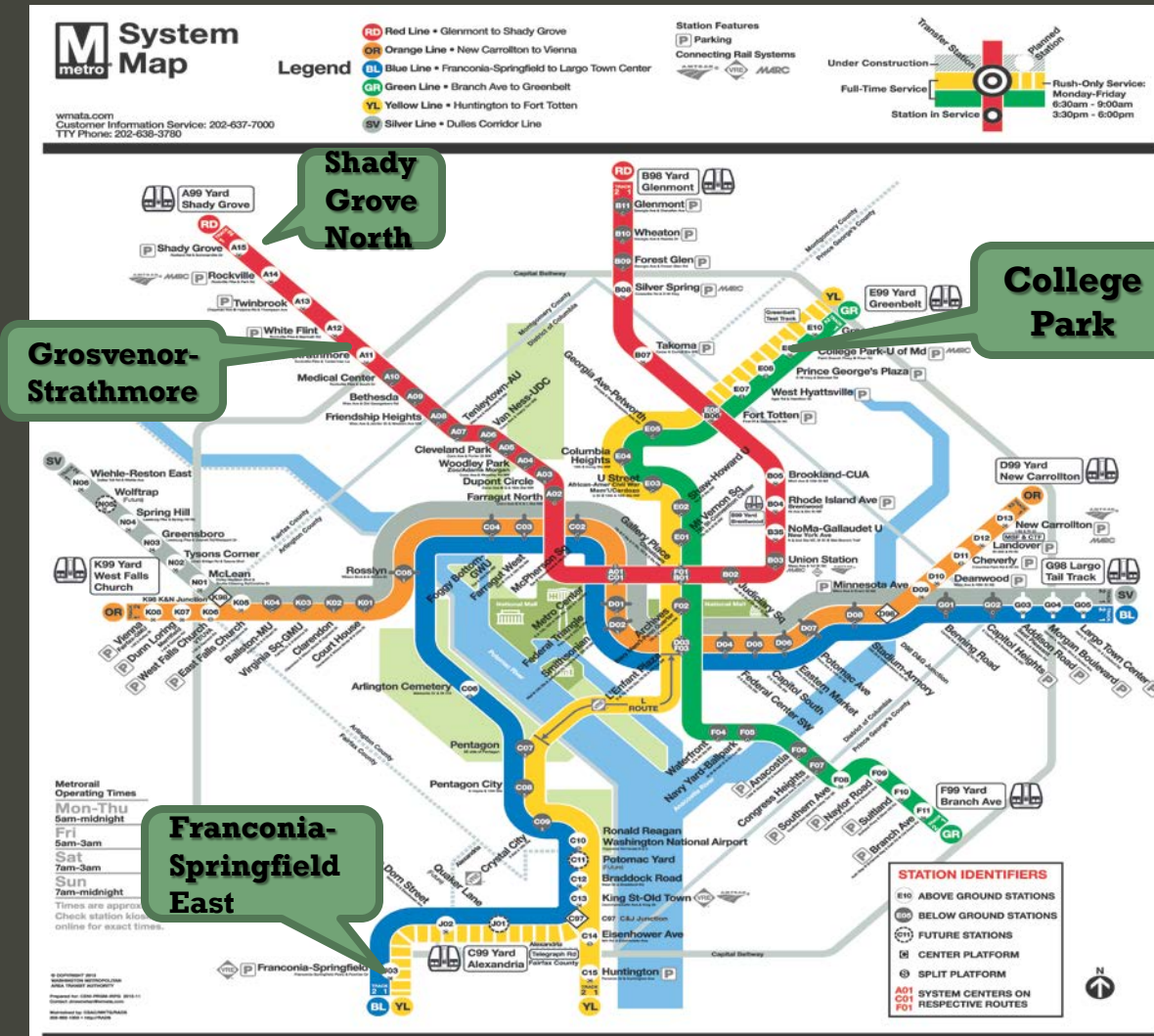


General Information

- The Washington Metropolitan Area Transit Authority (WMATA) Parking Garages at Shady Grove North, Grosvenor-Strathmore, College Park, and Franconia-Springfield (East) are four active commuter parking garages that serve the Washington DC Metro area stations along the A, E, and J lines.
- All four (4) parking garages share similar construction consisting of Pre-tensioned precast concrete double tee beams supported by inverted tee girders and precast columns.
- Commuter garages have a high occupancy rate during normal business hours, Monday through Friday.
- Occupancy rates are lower during the weekends and holidays.



FQ15090 – Rehabilitation of Parking Garages at Shady Grove North, Grosvenor-Strathmore, College Park and Franconia-Springfield (East)



Parking Garages Location and Description

FQ15090 – Rehabilitation of Parking Garages at Shady Grove North, Grosvenor-Strathmore, College Park and Franconia-Springfield (East)

M System Map

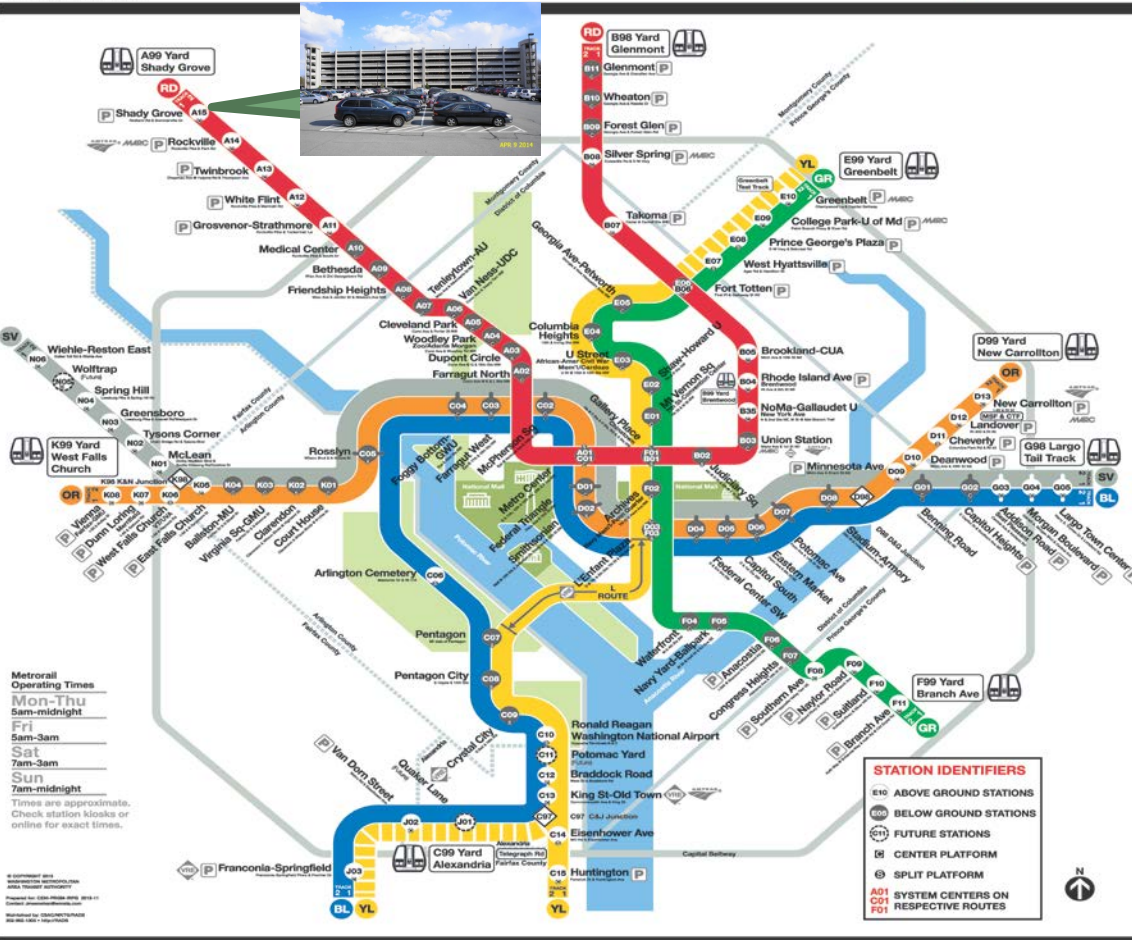
wmata.com
Customer Information Service: 202-637-7000
TTY Phone: 202-638-3780

Legend

- RD Red Line • Glenmont to Shady Grove
- OR Orange Line • New Carrollton to Vienna
- BL Blue Line • Franconia-Springfield to Largo Town Center
- GR Green Line • Branch Ave to Greenbelt
- YL Yellow Line • Huntington to Fort Totten
- SV Silver Line • Dulles Corridor Line

Station Features

- P Parking
- Connecting Rail Systems
- Under Construction
- Full-Time Service
- Station in Service



Shady Grove (North) Parking Garage

- Located at 15903 Somerville Drive, Rockville, MD Montgomery County 20855.
- The parking garage serves the Shady Grove Metro Station located on the red line.
- The garage structure consists of a ground level and six (6) elevated levels of car parking.
- The parking garage has an area of approximately 659,000 sf and was constructed in 2006.



FQ15090 – Rehabilitation of Parking Garages at Shady Grove North, Grosvenor-Strathmore, College Park and Franconia-Springfield (East)



wmata.com
Customer Information Service: 202-637-7000
TTY Phone: 202-638-3790

Legend

- RD Red Line • Glenmont to Shady Grove
- OR Orange Line • New Carrollton to Vienna
- BL Blue Line • Franconia-Springfield to Largo Town Center
- GR Green Line • Branch Ave to Greenbelt
- YL Yellow Line • Huntington to Fort Totten
- SV Silver Line • Dulles Corridor Line

Station Features
[P] Parking
Connecting Rail Systems
AMT
VIA
MARC

Under Construction
Full-Time Service
Station In Service
Transfer Station
Rush-Only Service:
Monday-Friday
6:30am - 9:00am
3:30pm - 6:00pm



Grosvenor-Strathmore Parking Garage

- Located on 5300 Tuckerman Lane Rockville, Montgomery County, Maryland 22150.
- The parking Garage serves Grosvenor-Strathmore Metro Station located on the red line.
- The Garage structure consist of a ground level and five (5) elevated levels of car parking.
- The parking garage has an area of 518,000sf and was constructed in 2006.

FQ15090 – Rehabilitation of Parking Garages at Shady Grove North, Grosvenor-Strathmore, College Park and Franconia-Springfield (East)



Franconia-Springfield (East) Parking Garage

- Located at 6880 Frontier Drive Springfield, Fairfax County Virginia 22150.
- The parking garage serves the Franconia-Springfield Metro Station located on the Blue and Yellow lines.
- The garage structure consists of a ground level and five (5) elevated levels of car parking.
- The parking garage has an area of 440,000 sf and was constructed in 2004.

FQ15090 – Rehabilitation of Parking Garages at Shady Grove North, Grosvenor-Strathmore, College Park and Franconia-Springfield (East)

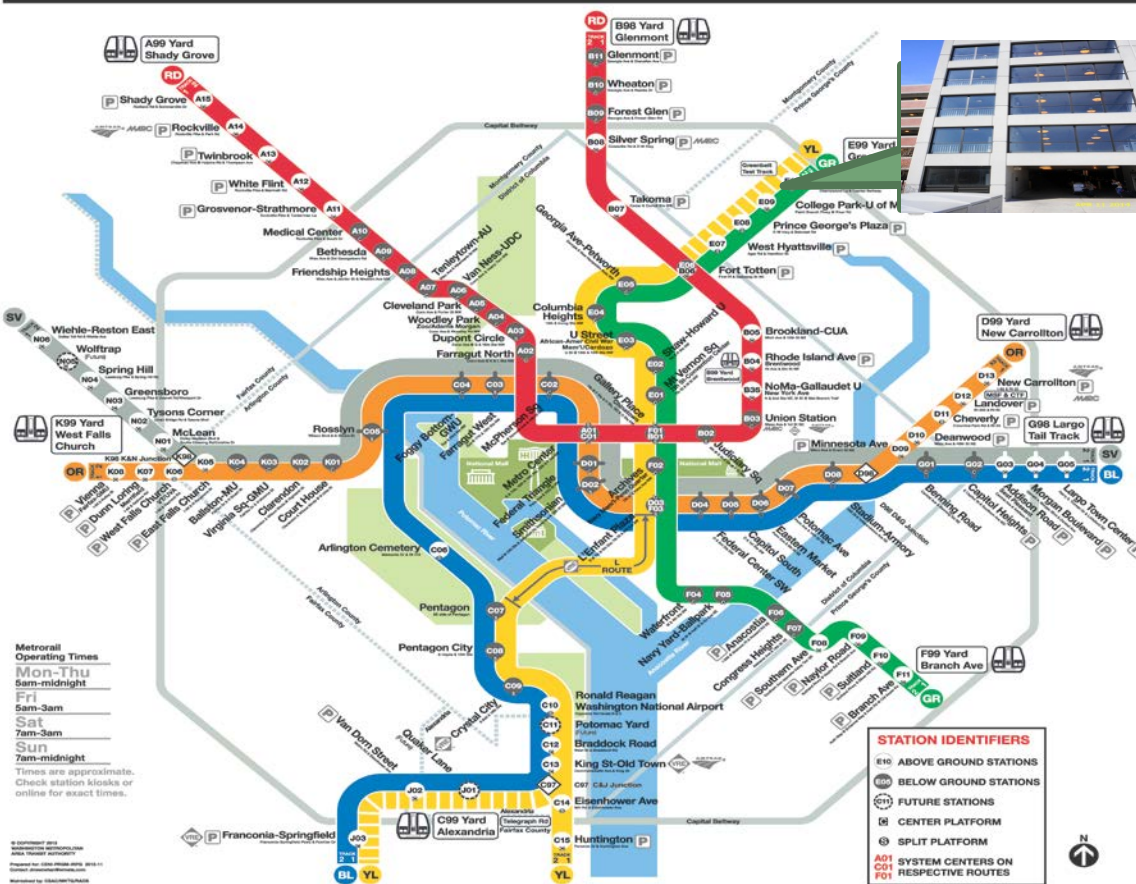
System Map

wmata.com
Customer Information Service: 202-637-7000
TTY Phone: 202-638-3790

Legend

- RD Red Line • Glenmont to Shady Grove
- OR Orange Line • New Carrollton to Vienna
- BL Blue Line • Franconia-Springfield to Largo Town Center
- GR Green Line • Branch Ave to Greenbelt
- YL Yellow Line • Huntington to Fort Totten
- SV Silver Line • Dulles Corridor Line

Station Features
[P] Parking
Connecting Rail Systems
AMTRAK
VIA METRO



College Park Parking Garage

- Located at 5211 Paint Branch Parkway in College Park Prince George's County Maryland 20740. The parking garage serves the College Park Metro Station located on the green and yellow lines.
- The garage structure consists of a ground level and five (5) elevated levels of car parking.
- The parking garage has an area of 419,000 sf and was constructed in 2004.



Parking Garages Location and Description



Shady Grove (North)
Parking Garage



Grosvenor-Strathmore
Parking Garage



College Park
Parking Garage



Franconia-Springfield East
Parking Garage



Typical Rehabilitation Requirements

The rehabilitation of all Four parking garages consists (but not limited to) of the following:

- Waterproofing of all elevated decks.
- Replacement of expansion and construction joints.
- Repair of concrete spalls at top and underside of decks.
- Repair of concrete cracks at top and underside of decks.
- Replacement of bearing pads at underside of precast members.
- Replacement of deck drainage system.
- Cleaning and painting of fire lines and wash down piping.
- Removal and new application of striping at all parking levels.
- Renovation of stairwells and bathrooms.
- Replacement or cleaning of electrical conduits and components.

Typical Expansion Joint to Be Repaired



Shady Grove
(North) Parking
Garage



Grosvenor-
Strathmore
Parking Garage



College Park
Parking Garage



Franconia-Springfield
East

Typical Construction Joint to Be Repaired



Shady
Grove(North)
Parking Garage



Grosvenor-
Strathmore
Parking Garage



College Park
parking Garage

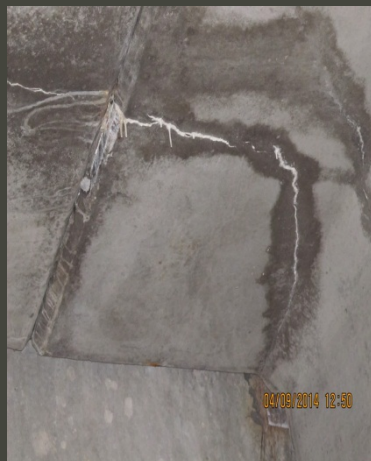


Franconia-
Springfield East

Typical Concrete Cracks to Be Repaired



Shady
Grove(North)
Parking Garage



Grosvenor-
Strathmore
Parking Garage



College Park
Parking Garage



Franconia-Springfield
East



FQ15090 – Rehabilitation of Parking Garages at Shady Grove North, Grosvenor-Strathmore, College Park and Franconia-Springfield (East)

Program Schedule Requirements

- Bar charts are required in Primavera Software (P6 or Compatible)



Receipt of Written Questions

The Authority will issue an amendment as required.

QUESTIONS ?



Site Visit

